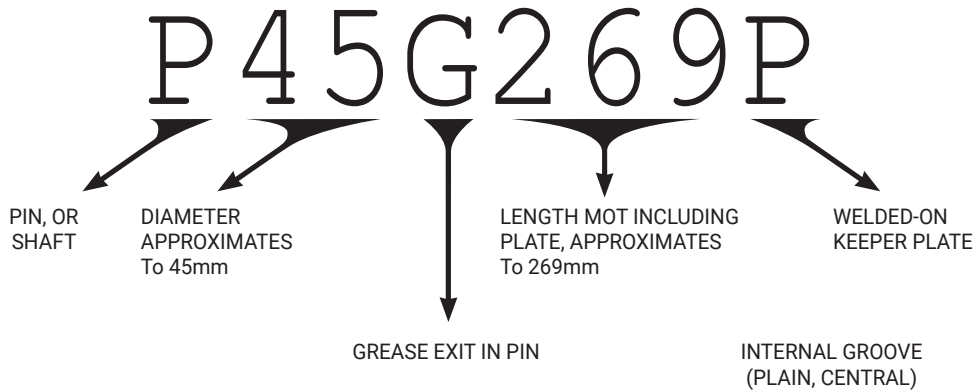


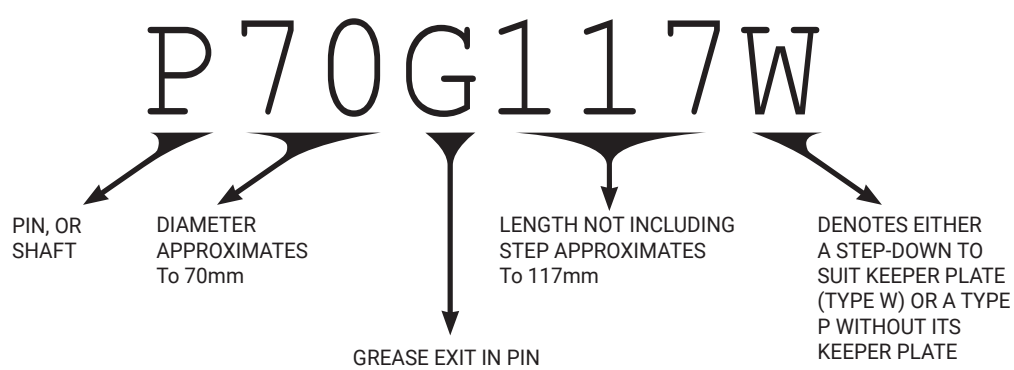
Key to KSet Part Numbers - Pins

K-SET PART NUMBERS ARE BASED ON A SIMPLE IDENTIFICATION SYSTEM USING SIZE APPROXIMATION
PINS ARE DESIGNATED **DIAMETER** (mm) BY **LENGTH** (mm)

EXAMPLE
SEE PAGE 53
(TYPE GP)



EXAMPLE
SEE PAGE 58
(TYPE GW)



TOLERANCES: OUTSIDE DIAMETERS ARE TO H10 STANDARD MANUFACTURE BAR TOLERANCE. THAT IS; PLUS NOTHING, AND MINUS SIZES GIVEN BELOW.
UP TO 30Ø: -0.084mm, 31 TO 50Ø: -0.1mm, 51 TO 80Ø: -0.12mm, 81 TO 120mmØ: -0.14mm
SPECIAL TOLERANCE H9 OR PRECISION GROUND TOLERANCE H8 ARE AVAILABLE ON REQUEST AND THE PRICE FOR SUCH SHOULD BE DISCUSSED WHEN ORDERING.

HARDNESS: MOST PINS LISTED ARE INDUCTION HARDENED TO 58 ROCKWELL C ± 2.

KEY TO HOLE AND GROOVE DETAILS

EXAMPLE: "2:10:19" 2 ONLY 10mm Ø CROSS DRILLED HOLES, 19mm FROM END OF PIN TO CENTRE OF HOLE.
EXAMPLE: "1-5-113" 1 ONLY 5mm Ø GREASE HOLE 113mm FROM END OF PIN.
EXAMPLE: "2C2.8:12" 2.8mm WIDE GROOVE, 12mm FROM EACH END.

OTHER ABBREVIATIONS

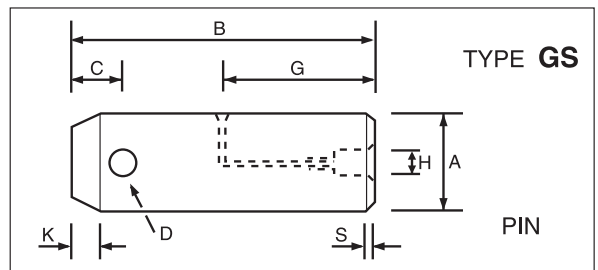
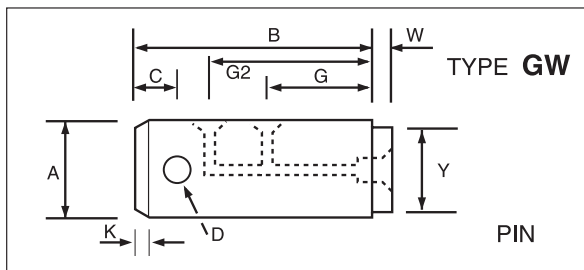
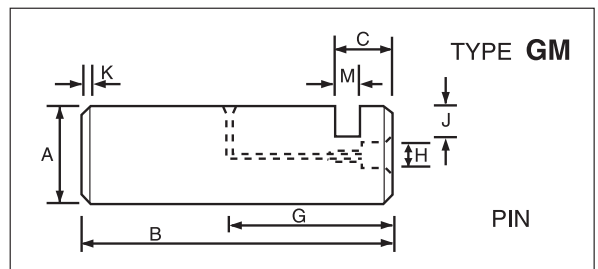
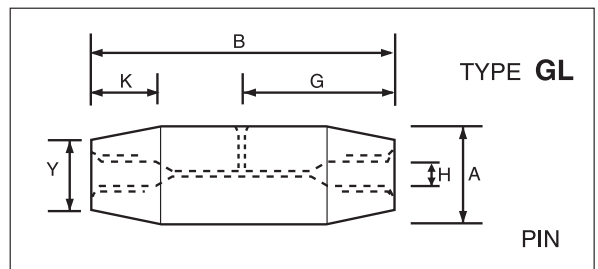
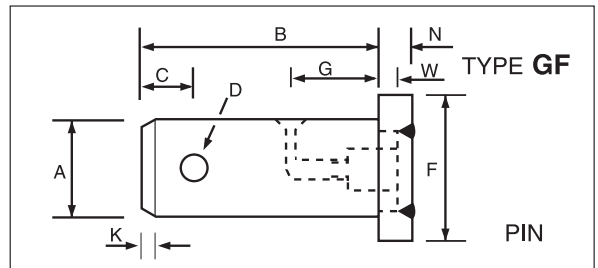
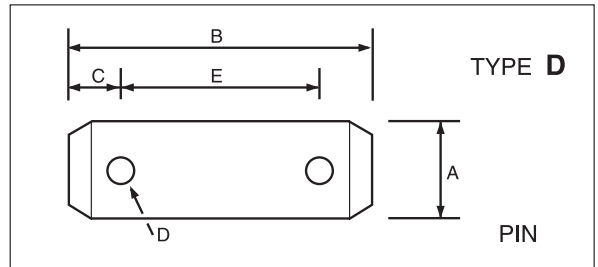
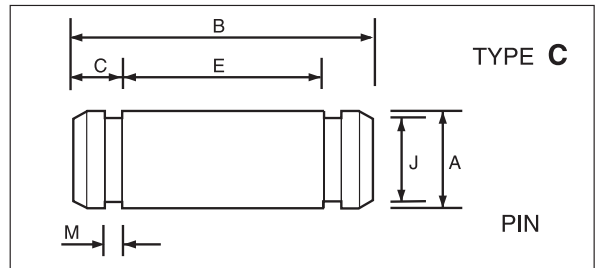
U/H = LENGTH OF PIN FROM UNDERSIDE OF HEAD, FLANGE, STEP, etc	SE = SAME END
CFR = CHAMFER	OE = OTHER END
DEG = DEGREES	BE = BOTH ENDS
CSK = COUNTERSINK	P.LK = PLATE LOCK
I/H = CASE HARDENED	
I/H = INDUCTION HARDENED	
TPR = TAPER	
RC = ROCKWELL "C"	

Configuration Index - Pins

- C = PIN, WITH CIRCLIP GROOVES
- D = PIN, BOLT HOLES BOTH ENDS
- F = PIN, FLANGE WELDED ONE END
- H = PIN, HEAD ONE END
- K = PIN, POINT ONE END
- L = PIN, LOCKING TAPER BOTH ENDS
- M = PIN, WITH MILLED LOCATING SECTION
- P = PIN, KEEPER PLATE WELDED ONE END
- Q = PIN, HANDLE / RING ONE END
- S = PIN, SINGLE BOLT HOLE
- T = PIN, THREAD ON ONE END
- U = PIN, GROOVE ON ONE END
- W = PIN, STEPPED DOWN ONE END
- G + ANY OF THE ABOVE = GREASABLE PIN

DIMENSIONS - SYMBOLS INDEX

- A = MAJOR DIAMETER
- B = LENGTH
- C = END TO HOLE / GROOVE
- D = DIAMETER OF HOLE
- E = LENGTH BETWEEN HOLES / GROOVES
- F = FLANGE / HEAD DIAMETER
- G = END TO GREASE EXIT
- G2 = END TO 2ND GREASE EXIT
- H = DIAMETER OF END HOLE / RECESS
- I = INSIDE DIAMETER
- J = DIAMETER OF GROOVE / DEPTH OF SLOT
- K = LENGTH OF POINT / TAPER
- L = END TO UNDER HEAD / FLANGE
- M = WIDTH OF GROOVE
- N = WIDTH OF FLANGE / HEAD
- S = LENGTH OF CHAMFER
- W = LENGTH OF STEP
- Y = MINOR DIAMETER
- Z = ZERK RECESS; 20mm Ø COUNTERBORE x 12mm DEEP, CHAMFERED 1mm x 45° DRILLED 8.75mm Ø TO EXIT DEPTH. TAPPED 1/8 N.S. x 6mm DEEP.



Induction Hardened Pin Steel - K1045 and 4140

<u>KSet Part No.</u>	<u>Price</u> EX GST	<u>Diameter</u>	<u>Length</u>	<u>Manufacture Notes</u>	<u>Machine Locations</u>
PG13-600	\$ 80	0.499"	600mm	13 Ø h9 4140 Ground	Induction Hardened
PG19-1000	\$110	0.75"	1000mm	3/4" Ø Hard Chrome 4140	Induction Hardened
PG20-530	\$ 90	19.98mm	530mm	20 Ø Hard Chrome 38MnVS6	Induction Hardened
PG20-600	\$100	19.98mm	600mm	20 Ø Hard Chrome 38MnVS6	Induction Hardened
PG23-1000	\$145	0.874"	1metre	7/8" Ø Hard Chrome 38MnVS6	Induction Hardened
PG23-Cr+Cut	\$125/m	+\$50 1st cut	\$30 next	7/8" Ø Hard Chrome 38MnVS6	Induction Hardened
PG25-860	\$ 80	24.99mm	860mm	25 Ø h9 4140 Ground	Induction Hardened
PG25-1000	\$115	24.99mm	1metre	25 Ø h9 4140 Ground	Induction Hardened
PG25-1030	\$120	24.99mm	1030mm	25 Ø h9 4140 Ground	Induction Hardened
PG26-1000	\$116	0.999"	1metre	1" Ø h9 4140 Ground	Induction Hardened
PG29-1000	\$130	1.124"	1metre	1 1/8" Ø h9 4140 Ground	Induction Hardened
PG30-452 3kg	\$ 80	29.98mm	450mm	30 Ø h9 4140 Ground	32mm mild both ends
PG30-1000	\$130	29.98mm	1metre	30 Ø h9 4140 Ground 5.6 kg	Induction Hardened
PG30+Cut	\$100/m	+\$50 1st cut	\$30 next	30 Ø h9 4140 Ground	Induction Hardened
PG32-1000	\$140	1.249"	1metre	1 1/4" Ø h9 4140 Ground	Induction Hardened
PG32+Cut	\$110/m	+\$50 1st cut	\$30 next	1 1/4" Ø h9 4140 Ground	Induction Hardened
PG35-1000	\$160	34.98mm	1metre	35 Ø h9 4140 Ground 7.6 kg	Induction Hardened
PG35+Cut	\$130/m	+\$50 1st cut	\$30 next	35 Ø h9 4140 Ground	Induction Hardened
PG35-Cr+Cut	\$150/m	+\$50 1st cut	\$30 next	35 Ø Hard Chrome 38MnVS6	Induction Hardened
1 1/2" Ø Hardened Pins and Shaft					
P38-100M	\$148	1.495"	3.94"	Eimco A2U912-193014	A2U130-193335
PG38G105P	\$298	1.499"	105mmUH	Precision Ground 4140 G=52uh P=Q35	0505-10021
PG38G125P	\$299	1.499"	125mmUH	Precision Ground 4140 P=Q35	0505-10022
P38-128M	\$130	1.495"	5.04"	Eimco EA6003-6	A2U130-193334
P38-142M	\$168	1.496"	5.59"	C12 M7.3 J5.9 K,S4x20° R20x2	A2U130-193436
P38-191	\$ 72	1.498"	7.50"	Eimco 1:14:19	A2U913-193008
P38G198C	\$ 50	1.499"	7.81"	John Deere 2C3:11.4 1-5-99	AT86429, T40637
P38G221	\$ 70	1.499"	8.70"	John Deere 1:10:13 1-5-81	T41972
PG38-1000	\$165	1.499"	1metre	4140 Ground h9 9kg	Induction Hardened
PG38+Cut	\$135/m	+\$50 1st cut	\$30 next	1 1/2" Ø h9 4140 Ground	Induction Hardened
PG38-Cr+Cut	\$158/m	+\$50 1st cut	\$30 next	1 1/2" Ø Hard Chrome 38MnVS6	Induction Hardened

Correct Material for Pins
What type of steel to machine bucket pins for a backhoe or bucket pins for an excavator?

High Tensile pins can be machined from hardened and tempered **4140** alloy steel and they will be tough enough to resist breaking.

Wear Hardness is added to the surface of the pin by **Induction Case Hardening** or **Flame Hardening**

Professional Material for Pins

Correct Material for Pins
The steel commonly used for Excavator Attachment Pins is **K1045** or **4140**

K1045 is a medium tensile steel for machining up **Link Pins**. **Pivot Pins** machined from K1045 must be **Surfaced Hardened** by Induction or Flame & **Tempered** at 180 to 200 Celsius
4140 is a high tensile steel.

Replacement Excavator Pins to be equivalent to or better than Original Equipment pins:
At **KSet** Hardness Testing is performed on the core of the OEM pin to determine **K1045** or **4140** material
KSet Hard Steel Shaft is chosen for a professional earthmoving equipment pin.

Wholesale Prices shown for \$170 Minimum order

Retail: POA \$130 Min order

Plus freight & GST. All prices subject to change without notice

Cut Pieces: Phone orders must be confirmed by email. No Returns. \$130 Minimum Order.

Induction Hardened Pin Steel - K1045 and 4140

<u>KSet Part No.</u>	<u>Price</u> EX GST	<u>Diameter</u>	<u>Length</u>	<u>Manufacture Notes</u>	<u>Machine Locations</u>
40 mm Ø Pins					
P40-146C	\$ 36	39.97mm	146mm	John Deere C7:14	T100339
P40-159MC	\$ 56	39.95mm	159mm	Case 580K C2.7:10, 23.75AF	E17663
P40G272	\$ 80	39.96mm	272mm	AT86426 1:11:89 30,50 oe	John Deere T69365
P40-602	\$110	39.97mm	600mm	Induction Hardened	35 mm Mild Both Ends
P40-1000	\$165	39.97mm	1metre	40 Ø K1045 Peeled h10	Induction Hardened
PG40-1000	\$205	39.98mm	1metre	40 Ø 4140 Ground h9	Induction Hardened
P40+Cut	\$130/m +\$55 1st cut		\$35 next	40 Ø K1045 Peeled h10	Induction Hardened
PG40+Cut	\$170/m +\$55 1st cut		\$35 next	40 Ø 4140 Ground h9	Induction Hardened

DRILL 11/32"
HSS Long Series
For Zerk Grease Fitting
135 degrees Split Point
Titanium Nitride Coated
\$ 18.00 ea plus GST

Code: TL-9ELI1132

6 Pack
DRILLS 11/32"
\$ 89.00 / 6
Code: TL6-9ELI1132



CARBON TAP
1/8" x 27 NPS
Bottoming Tap for
Zerk Grease Fitting
\$ 20.00 ea
Code: TL-NPSFCB18

CARBON TAPS
6 Pack; \$ 98.00 / 6
Code: TL6-NPSFCB18

Cross-Drilling of Bolt Holes at STATIC END of Induction Hardened Pin

(Where Hard Turning equipment is not available)

Make the area to be tempered shiny with emery paper.

Heat the spot that is to be drilled at least twice the diameter of the drill.

Heat to a **DARK BLUE**. Do **NOT** heat to **RED**. Repeat on underside where drill exits.

Drill slowly with **VERY SHARP** drill, keeping **COOL** all the time with **WATER**.

Do **NOT** heat or temper the pin near its wear surface

<u>KSet Part No.</u>	<u>Price</u> EX GST	<u>Diameter</u>	<u>Length</u>	<u>Manufacture Notes</u>	<u>Machine Locations</u>
1 3/4" Ø Pins					
P44G62HT	\$120	1.749"	2.45"UH	John Deere 1.25"UNFx32 H=57AFx8	T29624
P44-131C	\$ 40	1.749"	5.16"	John Deere 2C2.6:8	T124495
P44-134	\$ 40	1.749"	5.28"	John Deere 1:11:16	T44314
P44G175	\$ 44	1.749"	6.88"	John Deere 1:13:19 Thru 5-84	AT86423
P44-186CP	\$ 50	1.749"	7.32"	John Deere C2.8:11 P64x7:11	AT135084
P44-218C	\$ 36	1.749"	8.58"	Case 580K 2C3:11 3CFR	D52522
P44-251	\$ 90	1.737"	9.88"	John Deere 1:13:18 1/2"UNCx17 SE	T41979
P44-289	\$ 36	1.749"	11.38"	John Deere 2:10:12.7	T34485
P44-305	\$ 34	1.749"	12.00"	John Deere 1:13:40	CM20098
P44G321C	\$ 44	1.749"	12.64"	Case 580K 2C3:8.3 2-5-60BE	D55584
P44-323	\$ 55	1.749"	12.72"	John Deere 2:10:19 Made in Australia	AU13551
P44-323C	\$ 44	1.749"	12.72"	Case 580K 2C3:11	D89838
P44-394	\$ 70	1.749"	15.50"	John Deere T140880 - AU42333 - T125926	
P44-601	\$110	1.748"	600mm	Induction Hardened K1045	50 mm Mild One End
P44-751	\$120	1.748"	750mm	Induction Hardened K1045	50 mm Mild One End
PG44-1000	\$215	1.749"	1metre	1 3/4" Ø 4140 Induction Hardened	Ground h9
PG44+Cut	\$180/m +\$55 1st cut		\$35 next	1 3/4" Ø 4140 Induction Hardened	Ground h9

Cut Pieces: Phone orders must be confirmed by email. No Returns. \$130 Minimum Order.

Wholesale Prices
shown for **\$170**
Minimum order

Retail: POA
\$130 Min order

Plus freight & GST. All prices
subject to change without notice

Induction Hardened Pin Steel - K1045 and 4140

<u>KSet Part No.</u>	<u>Price</u> EX GST	<u>Diameter</u>	<u>Length</u>	<u>Manufacture Notes</u>	<u>Machine Locations</u>
45mm Ø Pins and Shaft					
P45-134	\$ 60	44.95mm	134mm	John Deere - 1:15:24	T147990
P45-165C	\$ 46	44.94mm	165mm	John Deere - 2C2.7:12	T100188
P45-177C	\$ 48	44.94mm	177mm	John Deere - 2C2.7:11 - T145346	T100289
P45G200	\$ 66	44.88mm	200mm	Furukawa - 1:11:42 1-5-100	550901-12180
P45G204P	\$ 166	44.96mm	204mmUH	Kubota Tap M16 x 35 Deep	KX161-3SS-Pin-H
P45G204GP	\$ 186	44.96mm	204mmUH	Kubota	KX161-3SS-Pin-I
P45-204TP	\$ 150	44.96mm	204mmUH	Yanmar - M24x3 W33 K4	VIO 50-Pin-H
P45G204TP	\$ 180	44.96mm	204mmUH	Yanmar - M24x3 W33 K4 G90 UH	VIO 50-Pin-I
P45G227GP	\$ 198	44.95mm	227mm	Kobelco - PY12B 010 09P1 G48,143,	SK045-Pin-H,I
P45G230GP	\$ 194	44.95mm	230mmUH	Komatsu - Before S/N 1731	PC45-Pin-H,I
P45G234GP	\$ 194	44.95mm	234mmUH	Komatsu 20T-70-71451 G59,G2,173UH	PC40,45-Pin-H,I
PG45G234GP	\$ 220	44.95mm	234mmUH	Komatsu 20T-70-71451	PC45-Pin-Ham
P45G250C	\$ 74	44.92mm	250mm	John Deere - 2C2.7:12.5 5-38BE	T100189, AT86422
P45G251P	\$ 150	44.96mm	251mmUH	Kubota	KX161-3SS-Pin-J,K
P45G265GP	\$ 200	44.95mm	265mmUH	IHI 5 tonne	IHI50-Pin-J,K
P45G269P	\$ 175	44.95mm	269mmUH	Yanmar - D10.3,C14,G119UH 6'oclk	VIO 50-Pin-J,K
P45-290P	\$ 118	44.95mm	290mmUH	Komatsu Steel Pin Factory Australia	PC45-PIN-J,K
P45G290G	\$ 210	44.95mm	290mmOAL	Kobelco PY12B 01018P1 K,S=2x30°	SK045-PIN-J,K
P45-396 5kg Bag	\$ 95	44.95mm	396mm	Induction Hardened	35 mm Mild Both Ends
P45G432	\$ 90	44.96mm	432mm	John Deere 1:13:28 78,328	T75383
P45-601	\$ 80	44.95mm	600mm	Induction Hardened	50 mm Mild One End

Dimensions shown are for the KSet Engineered Pin, not for similar OEM Parts.

Wear Life of Pin Materials

4140 Hardened & Tempered 29 Rockwell C
as available from steel merchants

K1045 - INDUCTION HARDENED 58 Rockwell C
58 Rockwell C (615 Brinell) resists wear about **10 times better** and longer than 29 Rockwell C

4140 - INDUCTION HARDENED 58 Rockwell C - Very Resistant to Breakage
58 Rockwell C (615 Brinell) resists wear about **12 times better** and longer than 29 Rockwell C

45mm Ø Shaft

PG45-1000	\$ 260	44.98mm	1metre	45 Ø 4140 Ground h9	12.5 kg	Induction Hardened
PG45+Cut	\$ 225/m +\$55 1st cut \$35 next			45 Ø 4140 Ground h9	12.5 kg	Induction Hardened

Cut Pieces: Phone orders must be confirmed by email. No Returns. \$130 Minimum Order.

Wholesale Prices
shown for \$170
Minimum order

Retail: POA
\$130 Min order

Plus freight & GST. All prices
subject to change without notice

Induction Hardened Pin Steel - K1045 and 4140

<u>KSet Part No.</u>	<u>Price</u> EX GST	<u>Diameter</u>	<u>Length</u>	<u>Manufacture Notes</u>	<u>Machine Locations</u>
P50-104T	\$POA	49.965mm	104.3mm	Expanding Shaft Assembly	suit Sandvik 26498041
P50-114T	\$POA	49.965mm	114mm	Expanding Shaft Assembly	suit Sandvik 26498042
P50-124T	\$170	49.965mm	124mm	Expanding Shaft Assembly	suit Sandvik 26438771
P50-140T	\$174	49.965mm	140mm	Expanding Shaft Assembly	suit Sandvik 26438772
P50-122P	\$ 90	49.96mm	122mmUH	Yanmar Aftermarket Made in Australia	VIO 50-Pin-E
P50-140P	\$140	49.96mm	140mmUH	Komatsu Wheel Loader	WA380-Pin-S
P50-147P	\$136	49.95mm	147mmUH	Kobelco Mini Excavator	SK045-Pin-E
P50G150P	\$200	49.96mm	150mmUH	Komatsu WA150-Pin-A	416-70-31370
P50-155P	\$110	49.95mm	155mmUH	Yanmar Mini Excavator	VIO 50-Pin-B,D
PG50-161P	\$168	49.91mm	161.5UH	Eimco 6-37-Q40-15E15.5H46	A2U220-193397
P50-165P	\$112	49.96mm	165mmUH	Komatsu Wheel Loader	WA180-Pin-L,K
P50G165P	\$165	49.95mm	165mmUH	Komatsu G=86 UH	WA180-Pin-J
P50G175C	\$ 88	49.96mm	175mm	Case Loader Bucket Pin	W14B-Pin-J
P50-183P	\$ 92	49.96mm	183mmUH	Yanmar Mini Excavator	VIO 50-Pin-C
P50-185P	\$146	49.95mm	185mmUH	Kobelco Mini Excavator	SK045-Pin-C
P50-192C	\$ 65	49.73mm	192mm	John Deere 2C2.7:10	T127437
P50G196M	\$162	49.95mm	196mm	Komatsu Mini Excavator	PC45-Pin-C
PG50-198C	\$ 96	49.95mm	198mm	Custom Pin	Agricultural
P50G213P	\$182	49.95mm	213mmUH	Kobelco Mini Excavator	SK045-Pin-D
P50G227GP	\$184	49.95mm	227mmUH	Kobelco C9 D9	SK045-Pin-H,I
P50-230P	\$125	49.96mm	230mmUH	Yanmar Mini Excavator	VIO 50-Pin-F
P50G233GP	\$242	49.95mm	233mmUH	Komatsu 20T-70-25650 14-40Y66-38x30	PC40-Pin-F
P50-235P	\$152	49.95mm	235mmUH	Komatsu Mini Excavator	PC45-Pin-F
P50G260GP	\$177	49.95mm	258mmUH	Kobelco 1:14:15.3 68,187	SK045-PIN-F
P50G267GP	\$182	49.96mm	267mmUH	Kobelco Mini Excavator	SK060-PIN-H,I
P50G275GP	\$180	49.95mm	275mmUH	Komatsu Bucket Pin	PC50UU-PIN-J,K
P50-279C	\$ 70	49.95mm	279mm	T148743 2C3:12.5 John Deere - T106389	
P50-285P	\$190	49.95mm	285mmUH	Kobelco Mini Excavator	SK045-Pin-F
P50-286P	\$156	49.95mm	285mmUH	207-70-72250 Komatsu F75 N8 C14 D16	PC60-7-Pin-I
P50G286GP	\$246	49.95mm	285mmUH	20X-70-24260 Komatsu -	PC75-UU-2-Pin-I
P50-310P	\$215	49.95mm	310mmUH	201-70-64210 F75 N8	PC75-UU-Pin,J,K
P50-320P	\$125	49.95mm	320mmUH	Yanmar Mini Excavator	VIO 50-PIN-A
P50-321 5kg Bag	\$ 80	49.95mm	320mm	Induction Hardened 45 mm Mild One End	
P50-330	\$110	49.96mm	330mm	Kobelco Mini Bucket Pin	SK060-PIN-J,K
P50-335P	\$180	49.95mm	335mm	PC40R-PIN-A Komatsu -	PC45-PIN-A
P50-351	\$ 86	49.95mm	350mm	Induction Hardened 30 mm Mild One End	
P50-355	\$158	49.95mm	355mm	Kobelco C14,D13,K3x30°	SK045-PIN-A
P50-602	\$120	49.95mm	600mm	Induction Hardened 45 mm Mild Both Ends	
P50-1000	\$220	49.97mm	1metre	50 Ø K1045 Ground h8	Induction Hardened
PG50-1000	\$270	49.98mm	1metre	50 Ø 4140 Ground h8 15.5 kg	Induction Hardened
P50+Cut	\$190/m +\$50 1st cut		\$30 next	50 Ø K1045 Ground h8	Induction Hardened
PG50+Cut	\$240/m +\$50 1st cut		\$30 next	50 Ø 4140 Ground h8 15.5 kg	Induction Hardened

Wholesale Prices
shown for \$170
Minimum order

Retail: POA
\$130 Min order

Plus freight & GST. All prices
subject to change without notice

Cut Pieces: Phone orders must be confirmed by email. No Returns. \$130 Minimum Order.

Induction Hardened Pin Steel - K1045 and 4140

KSet Part No.	Price EX GST	Diameter	Length	Manufacture Notes	Machine Locations
2" Ø					
2" Diameter Shaft and Pins:					
PG51G94P	\$264	1.999"		0310-10018 2kg	4140 IH Steering Pin
PG51G115M	\$154	1.999"	4.53"	A2U130-193380	4140 Eimco 222 414
PG51G121M	\$155	1.999"	4.76"	A2U130-193336	4140 Eimco ED10
PG51G127M	\$154	1.999"	5.00"	A2U220-193388	4140 Eimco
PG51-152Tr	\$330	1.999"	5.97" ^{Oa1}	Taper Pin Made in Australia	to suit Cat 1745578
P51G152P-Cr	\$220	1.999"	6.00" ^{UH}	Chrome Pin 4140 IH	557 490 900
P51-163H	\$330			T150621 Made in Australia	John Deere Grader
P51G186P-Cr	\$230	1.999"	7.32" ^{UH}	Chrome Pin 4140 IH	557 490 800
P51-187P	\$205	1.999"	8.62" ^{UH}	136-1711	CAT972G-Pin-S
P51G200P	\$130	1.998"	7.88" ^{UH}	0902-10002 G98uh Thru Y47x5	P=Q60 Juganaut
P51G215P	\$134	1.998"	8.47" ^{UH}	0902-10023	P=Q60 Juganaut
P51-219P	\$104	1.999"	8.62" ^{UH}	CAT936,926 Bkt / Lift	P=X105 4V2588
P51G221	\$170	1.998"	8.70"	G = 104 Drilled Through New	P51G215W MM Trailer
P51G220M	\$166	1.997"	8.66"	HRB197 C16 M8 J12.7 2-5-114	Eimco Bucket
P51-236	\$ 64	1.999"	9.29"	T46715 Made in Australia	John Deere
P51-255	\$130	1.988"	10.04"	T41977	John Deere Grader
P51-267P	\$ 99	1.998"	10.50"	AT64844	John Deere Grader 860A
P51G381P	\$430	1.989"	15.00"	AT57024 Made in Australia	John Deere
P51G402C	\$140	1.998"	15.81"	E172976, D91240	Case 580 Backhoe Bucket

Dimensions shown are for the KSet Engineered Pin, not for similar OEM Parts.

Cross-Drilling of Bolt Holes at STATIC END of Induction Hardened Pin

(Where Hard Turning equipment is not available)

Make the area to be tempered shiny with emery paper.

Heat the spot that is to be drilled at least twice the diameter of the drill.

Heat to a **DARK BLUE**. Do **NOT** heat to **RED**. Repeat on underside where drill exits.

Drill slowly with **VERY SHARP** drill, keeping **COOL** all the time with **WATER**.

Do **NOT** heat or temper the pin near its wear surface

		2" Ø	2" Diameter Shaft		
PG51-1000	\$280	1.999"	1metre	4140 Ground h9 16kg	Induction Hardened
PG51+cut	\$250/m	+\$50 1st cut	\$30 next	2" Ø 4140 Ground h9	Induction Hardened
PG51-Cr+cut	\$350/m	+\$50 1st cut	\$30 next	2" Ø 38MnVS6 HardChrome	Induction Hardened

Cut Pieces: Phone orders must be confirmed by email. No Returns. \$130 Minimum Order.

Pins and Bushes
Shims and Seals
Tools and Cutters
Retail Orders POA
Minimum \$130

Plus freight & GST. All prices subject to change without notice

Induction Hardened Pin Steel - K1045 and 4140

<u>KSet Part No.</u>	<u>Price</u> EX GST	<u>Diameter</u>	<u>Length</u>	<u>Manufacture Notes</u>	<u>Machine Locations</u>
P55G150P	\$149	54.97mm	150mmUH	421-46-21760 G75 UH@3clK	WA470,480-PIN-S
P55-230	\$96	54.99mm	230mm	T142121 C59 D17	John Deere 315
P55-345	\$132	54.84mm	345mm	T125922, T79866	John Deere 315
P55-355	\$187	54.98mm	335mm	PY02B 010 14P1 Kobelco	SK045-PIN-B
PG55G370GM	\$435			Sheave Axle, Mast	4140
PG55-1000	\$360	54.97Ø	1metre	Precision Ground 4140 18.7kg	Induction Hardened
PG55+Cut	\$330/m	+\$50 1st cut	\$30 next	Precision Ground h8 4140	Induction Hardened
PG55-Cr+Cut	\$480/m	+\$50 1st cut	\$30 next	Hard Chrome 38MnVS6	Induction Hardened
P57-111HT	\$218	2.247"	4.38"UH	AT25333	John Deere 644 Loader
P57G160M	\$191	2.248"	6.30"	HRB305 Milled Retainer Slot	Eimco
P57-163P	\$150	2.249"	6.42"UH	5G8574 to suit Caterpillar	Cat910G-Pin-J
P57G186M	\$198	2.248"	7.31"	HRB306 Milled Retainer Slot	Eimco
P57G200P	\$140	2.249"	7.87"	CAT980G-Pin-S For 8Y7028, Suits 158-5633	
P57-204C	\$190	2.248"	204mm	Caterpillar 6J5985 D11 Lift Cyl/Con Block	
P57-285C	\$178	2.249"	11.22"	Cat 9W2939 C28.2,J37.7 D11 Lift Cyl / Blade	
PG57-601	\$190	2.245"	600mm	h10 Ground 4140	Induction Hardened
PG57-1000	\$380	2.249"	1metre	4140 Precision Ground h8	Induction Hardened
PG57+Cut	\$350/m	+\$50 1st cut	\$30 next	4140 Precision Ground h8	Induction Hardened
PG60-100H	\$240	59.9mm	100UH	Articulation locking pin	0502-10015
P60-159P	\$151	59.9mm	159mmUH	PY02B 010 24D1 Kobelco	SK045-Pin-SL
P60-164P	\$140	59.92	164mmUH	Komatsu to suit 425-46-12120 F90G60	WA500-3-Pin-S
P60G164P	\$172	59.92	164mmUH	Komatsu to suit 425-46-12380 F90G60	WA500-3-Pin-SG
P60-182	\$139	59.9mm	182mm	PY02B 010 20P1 Kobelco	SK045-Pin-TD
P60-287P	\$190	59.9mm	287mmUH	207-70-64420, 201-70-67220	PC60,75UU2-Pin-H
P60G298GP	\$270	59.9mm	298mmUH	Cat Aftermarket Made in Australia	For 716843
P60G333GP	\$270	59.9mm	333mmUH	Kobelco Aftermarket Made in Australia	SK120-Pin-H,I
P60G349GP	\$270	59.9mm	349mmUH	Komatsu to suit 202-70-64151 F90N6	PC120-PIN-I
P60G354GP	\$290	59.9mm	354mmUH	YY12B 021 88P1 Kobelco	SK135SR-2-Pin-I
P60-385P	\$204	59.9mm	385mmUH	Kobelco C35D14C12D12	SK120-Pin-J,K
P60-417P	\$220	59.9mm	417mmUH	Komatsu to suit 203-70-44380 F90N6K10	PC120-Pin-J,K
P60-400	\$205	59.9mm	400mmUH	Komatsu Quick Hitch	PC120-Pin-Q
P60-451	\$148	59.9mm	450mm	Induction Hardened K1045	50mm Mild One End
P60-601	\$160	59.9mm	600mm	Induction Hardened K1045	50mm Mild One End

New Zealand Pin Steel
KSet hardened steel bush
Leave KSet Monday
Arrive New Zealand
Wednesday

Case Hardened Bushes
Hardened Steel Canada
KSet hardened steel bush
Leave KSet Friday
Arrive Canada Monday
Case Hardened Bushes

Steel Bearing Sleeve USA
KSet hardened steel bush
3 days to North America
Leave KSet Wednesday
Delivered America Friday

America Steel Bearings
KSet hardened steel bush
3 day delivery to USA
Leave KSet Friday
Delivered America Monday

Prices shown are for \$170 Minimum Wholesale Order, Plus freight & GST.
Orders below this amount are Retail, POA and \$130 minimum.
All prices subject to change without notice

P60-1000	\$355	59.99mm	1metre	Precision Ground K1045 h8	Induction Hardened
PG60-1000	\$395	59.99mm	1metre	Precision Ground 4140	Induction Hardened
P60+Cut	\$320/m	+\$55 1st cut	\$35 next	60 Ø K1045 Ground h8	Induction Hardened
PG60+Cut	\$360/m	+\$55 1st cut	\$35 next	60 Ø 4140 Ground h9	Induction Hardened

Cut Pieces: Phone orders must be confirmed by email. No Returns. \$130 Minimum Order.

Induction Hardened Pin Steel - K1045 and 4140

<u>KSet Part No.</u>	<u>Price</u> EX GST	<u>Diameter</u>	<u>Length</u>	<u>Manufacture Notes</u>	<u>Machine Locations</u>
PG63G120P	\$ 285			0307-10034 IH 4140 Lift Cylinder Front Frame	
PG63G165P	\$ 460	2.499"	6.50"UH	Pin Tilt Cylinder	MIS End
PG63-167	\$ 190			0308-10032 IH 4140 Tilt Cylinder Pin	
P63G168	\$ 94	2.499"	6.65"	KSet Pin	C21 D17 G73 H25
PG63G179M	\$ 320	2.500"	7.05"	BU00001213 G85 OffSetZerk C15.5 M10.6 J15 AF54	
P63G184	\$ 238	2.499"	7.25"	A2U130-193437 C14 D13.5 G88 OffSetZerk 222 403	
PG63G185	\$ 238	2.499"	7.28"	A2U130-193338 4.6kg 222 403 Eimco	
P63-198	\$ 126	2.498"	7.78"	HRB321 1:17.5:51 Eimco	
P63G203M	\$ 128	2.498"	8.00"	A2U913-193010 Check Length 1-6-89 Eimco	
PG63G220G	\$ 336			0307-10033 Lift Cylinder Boom Pin	
P63G240M	\$ 240	2.498"	9.45"	A2U913-19310-Z Eimco	
P63-282P	\$ 145	2.499"	11.10"UH	7V6715 P=12-39X102-44x30 CAT966G,972GH-Pin-J	
P63G286	\$ 232	2.497"	11.26"	6440 0498 C38 D18 G89 HRB320 Eimco	
PG63G305	\$ 262	2.498"	12.00"	222 404 A2U130-193438, A2U130-193337 Eimco	
P63G308	\$ 220	2.498"	12.13"	202 482 1:27:26,1:14.3:61 Eimco	
P63G308G	\$ 224	2.498"	12.13"	A2U130-193435 Dump Cyl to QDS Eimco	
PG63G308G	\$ 334	2.498"	12.13"	BU00001204 Dump Cyl/QDS LS190/ED10 Eimco	
P63G314	\$ 210	2.498"	12.36"	A2U220-193420 C14.3 D14.3 G140 Thru Eimco	
PG63G314	\$ 290	2.498"	12.36"	BU00001207 4140 LS190/ED10 Eimco	
P63-318	\$ 160	2.498"	12.52"	226 289 1:14.3:17.5 Eimco	
PG63-318	\$ 220	2.499"	12.52"	BU00000676 1:14:16 226 289 LA ED7/LS170 Eimco	
PG63G327	\$ 280	2.498"	12.87"	A2U220-193446 C17 D14 G150 Eimco	
P63-1000	\$ 330	2.498"	1metre	K1045 Ground h8	Induction Hardened
PG63-1000	\$ 400	2.499"	1metre	4140 Ground h8 24.9kg	Induction Hardened
P63+Cut	\$ 300/m	+\$50 1st cut	next \$30	2.5" Ø K1045 Ground h8	Induction Hardened
PG63+Cut	\$ 370/m	+\$50 1st cut	next \$30	2.5" Ø 4140 Ground h8	Induction Hardened
PG63-Cr+Cut	\$ 490/m	+\$50 1st cut	next \$30	Hard Chrome 33MnVS6	Induction Hardened
PG65-145P	\$ 260	64.95mm	145mmUH	Tow Pin 0501-10091	
P65-148P	\$ 170	64.9mm	148mmUH	202-70-52121 Komatsu K2,P=Y69 PC120-Pin-G	
P65G165P	\$ 192	64.9mm	165mmUH	418-70-11921,417-70-31720 G=95 WA200, 250-Pin-L,K	
P65-172P	\$ 168	64.9mm	172mmUH	Komatsu 1-5-87 WA200-Pin-L,K	
P65G181P	\$ 190	64.9mm	181mmUH	416-70-11910 Komatsu WA120,180,200-Pin-J	
P65G186P	\$ 202	64.95mm	186mmUH	418-70-11910 Komatsu G=95uh WA250-Pin-J	
P65G190P	\$ 210	64.95mm	190mmUH	Komatsu G=95uh WA250-5-Pin-5	
PG65-245	\$ 115	64.95mm	245mm	Plain Pin IH 4140 Ground h9	
P65G347GP	\$ 290	64.93mm	347mmUH	202-70-64161 F90N6K7 Komatsu PC120-Pin-H	
P65G354GP	\$ 320	64.93mm	354mmUH	YY12B02189P1 Kobelco SK135SR-2-Pin-H	
P65-411	\$ 170	64.78mm	411mm	086-0523 C40 D15 C2=12 D2=12 K27 S3 CAT 311	
P65-430P	\$ 200	64.93mm	340mmUH	YY12B01242P1 Kobelco SK135SR-2-Pin-J,K	
P65-801	\$ 260	64.94mm	800mm	Induction Hardened K1045 50 mm Mild One End	

Dimensions shown are for the KSet Engineered Pin, not for similar OEM Parts.

P65-1000	\$ 350	64.94mm	1metre	K1045 h9 26kg	Induction Hardened Full Length
PG65-1000	\$ 440	64.98mm	1metre	Precision Ground 4140	Induction Hardened
P65+Cut	\$ 320/m	+\$50 1st cut	\$30 next	65 Ø K1045 Ground h9	Induction Hardened
PG65+Cut	\$ 410/m	+\$50 1st cut	\$30 next	65 Ø 4140 Ground h9	Induction Hardened
PG65-Cr+Cut	\$ 500/m	+\$50 1st cut	\$30 next	Hard Chrome 4140	Induction Hardened

Cut Pieces: Phone orders must be confirmed by email. No Returns. \$130 Minimum Order.

Perth WA Steel Delivered Next Day

Place your order in the morning for delivery to Perth next day Perth Pin Steel Cut & delivered next day using TNT Express next day delivery service

Perth Steel Next Day @ \$8.80 / kg

Example 1:

2 1/2" Dia x 1 metre bar \$222
Plus 25 kg Air Freight \$220
Total Free Into Store: \$442

Example 2:

65mm Dia Pin x 600mm \$166
Plus 16 kg Air Freight \$141
Total Free Into Store: \$307

Perth WA Steel 4140 Delivered Next Day

Place your order in the morning for delivery to Perth next day

4140 Pin Steel

Cut & delivered next day using TNT Express next day delivery service

Perth Steel Next Day @ \$8.80 / kg

Example 3:

65mm 4140 Pin x 500mm \$270
Plus 25 kg Air Freight \$220
Total Free Into Store: \$490

Examples above are based on current costs and are subject to change without notice and do not include GST

Pins and Bushes

Shims and Seals

Tools and Cutters

Retail Orders POA

Minimum \$130

Plus freight & GST. All prices subject to change without notice

Induction Hardened Pin Steel - K1045 and 4140

KSet Part No.	Price EX GST	Diameter	Length	Manufacture Notes	Machine Locations
2 3/4" Ø Pins					
P69-186P	\$ 152	2.749"	7.31"UH	4V3619	CAT926 Bkt / Lift
P69-292P	\$ 388	2.749"	11.50"UH	114-1153	CAT980G-Pin-J
PG69G200	\$ 360	2.749"	200mm	0504-10002 Precision Ground	4140 JUG-A-O
P69-1000	\$ 340	2.748"	1m	2.75" Ø K1045 Peeled h10	Induction Hardened
PG69-1000	\$ 520	2.749"	1m	2.75" Ø 4140 Peeled h9	Induction Hardened
PG69-Cut	\$620/m	+\$50 1st cut	next \$30	Hard Chrome 30MnVS6	Induction Hardened
70mm Ø Pins & Shaft					
P70G92P	\$ 158	69.9mm	92mm	105752A1 D140093 2-5-43	Case580K-Pin-A
P70G102P	\$ 190	69.9mm	102mmUH	Case P=Q100 Centre Mount	580SE-Pin-A
P70G129C	\$ 178	69.9mm	129mmUH	Case C10E109Y65W13 G62 Thru	580SL-Pin-TU
P70G130P	\$ 164	69.9mm	130mmUH	E176201 1-5-65 P=Q100	Case 580K
P70-132T	\$ 260	70.0mm	132mm	Sandvik Aftermarket Pin Assembly	26438801
P70-135P	\$ 168	69.9mm	135mmUH	Samsung 16-42Y107 45x39	SE130-Pin-B
P70-137	\$ 150	69.9mm	137mm	Kobelco C15D13.3K3R	SK045-Pin-TU
P70G145P	\$ 230	69.9mm	145mmUH	Pin @ 6.5 kg Type GP G=60uh D=10 Ø C=1 Plate=Q94	
P70G153C	\$ 170	69.9mm	152mm	Case 580K D151065 C10,E132, M2.7	580SL-Pin-TL
P70-156C	\$ 112	69.9mm	156mm	2C2.7:5.2 K,S=1.5 Case 112294A1	580SK-Pin-B
P70-156P	\$ 176	69.9mm	156mmUH	203-46-56260 16-46Y71-36x37 M16 Plate End K1	PC120-Pin-B
P70-157P	\$ 160	69.9mm	157mmUH	Komatsu - 418-70-11941	WA180-Pin-E
P70G158P	\$ 190	69.9mm	158mmUH	Komatsu - 203-70-61320 No Zerk	PC120-Pin-D
P70G161C	\$ 166	69.9mm	161mm	139262A1 E141,C10,Y65,W13	Case 590-TU
P70G168C	\$ 199	69.9mm	168mm	E48844 2C2.6:9.5 G88 Thru	Case 580K
P70G175P	\$ 180	69.9mm	175mmUH	203-70-42121 16-46Y71-36x37 G87UH	PC120-Pin-E
P70-190P	\$ 190	69.9mm	190mmUH	205-70-71210 K9x25° 20-58Y84 2M12	PC200-Pin-B,G
P70-224HM	\$ 785	69.97Ø	224mmUH	Sandvik 20790608 8.17kg Shaft Extra Swing Pin	
PG70G290P	\$ 380	69.9mm	290mmUH	Volvo Excavator Pin Aftermarket	EC240Pin-Ham
P70-306P	\$ 294	69.9mm	306mmUH	Cat Aftermarket Made in Australia For	248-7820
P70-315P	\$ 260	69.9mm	315mmUH	Kobelco Excavator Pin Aftermarket	SK135-Pin-F
P70-327P	\$ 302	69.9mm	327mmUH	Komatsu - 418-70-11961	WA180-Pin-F
P70-355P	\$ 294	69.9mm	346mmUH	202-70-61210 16-46Y71-36x37	PC120-Pin-F
P70-412P	\$ 310	69.9mm	412mm	205-70-73160 C40 D22 C12 D12	PC200-Pin-H,I
PG70-413P	\$ 360	69.99	412mmUH	Induction Hardened 4140	PC200-Pin-Ham
P70G470GP	\$ 460	69.9mm	446mmUH	Kobelco - SK200-Pin-I	Kobelco - SK220-Pin-I
P70G539P	\$ 450	69.9mm	539mmUH	189-3932 DB Family	Cat330D-Pin-I
P70G550GGP	\$ 450	69.9mm	550mmUH	Cat325, Cat330 G85,292,385uh	7Y3548
P70-605	\$ 420	69.9mm	605mm	Tapped 2 x M14 each end	PC138-Pin-C
P70-656	\$ 260	69.9mm	656mm	202-70-61180 E=618,C=19,D=17	PC120-Pin-C
P70-658	\$ 298	69.9mm	658mm	Samsung Excavator C45,D18,E570	SE130-Pin-C
P70-660P	\$ 300	69.9mm	660mmUH	202-70-61160 16-46Y71-36x37	PC120-Pin-A
P70-715P	\$ 346	69.9mm	715mmUH	Komatsu	PC138-Pin-A

Dimensions shown are for the KSet Engineered Pin, not for similar OEM Parts.

P70-1000	\$ 415	69.9mm	1m	Precision Ground h9 K1045	Induction Hardened
PG70-1000	\$ 490	69.97mm	1m	Precision Ground 4140 30.2kg	Induction Hardened
P70Pld+Cut	\$290/m	+\$55 1st cut	\$35 next	70 Ø K1045 Peeled h9	Induction Hardened
P70+Cut	\$380/m	+\$55 1st cut	\$35 next	70 Ø K1045 Ground h9	Induction Hardened
PG70+Cut	\$455/m	+\$55 1st cut	\$35 next	70 Ø 4140 Ground h9 30.2kg/m	Induction Hardened

Cut Pieces: Phone orders must be confirmed by email. No Returns. \$130 Minimum Order.

Correct Material for Pins
What type of steel to machine bucket pins for a backhoe or bucket pins for an excavator?

High Tensile pins can be machined from hardened and tempered 4140 alloy steel and they will be tough enough to resist breaking.

Wear Hardness is added to the surface of the pin by **Induction Case Hardening** or **Flame Hardening**

Professional Material for Pins

Correct Material for Pins
The steel commonly used for Excavator Attachment Pins is **K1045** or **4140**

The pin below is made from **EN36A** Case hardened

Wholesale Prices
shown for **\$170**
Minimum order

Retail: POA
\$130 Min order

Plus freight & GST. All prices subject to change without notice

Induction Hardened Pin Steel - K1045 and 4140

KSet Part No.	Price EX GST	Diameter	Length	Manufacture Notes	Machine Locations
PG71-408P	\$ 430	70.96	408mmUH	3088579 Hitachi	ZX200, 225USR-Pin-I
PG71+Cut	\$ 540/m	+\$50 cut	next \$30	70.96 Ø 4140 Ground h8	31 kg/m Induction Hardened
P75G165P	\$ 250	74.9mm	165mmUH	419-70-11971	Komatsu WA320-PIN-C
P75-200P	\$ 210	74.9mm	193mmUH	WA250-PZ-6-Pin-L,K	WA300, 320-PIN-L,K
P75-205P	\$ 220	74.9mm	205mmUH	419-T80-4821	WA320-PZ-6-Pin-J
P75G205P	\$ 260	74.9mm	201mmUH	WA250-PIN-J B=185uh	WA300, 320-PIN-J
P75G260P	\$ 290	74.9mm	260mmUH	419-70-11981	Komatsu WA320-PIN-B
P75G334GP	\$ 446	74.9mm	335mmUH	154-78-14182, 154-78-14191	2xZerk D85A Ripper
P75-1000	\$ 450	74.97mm	1m	75 Ø K1045 Ground h9	34.7 kg/m Induction Hardened
PG75-1000	\$ 540	74.99Ø	1m	75 Ø 4140 Ground h9	Induction Hardened
P75+Cut	\$ 440/m	+\$50 cut	next \$30	75 Ø K1045 Ground h9	Induction Hardened
P75Pld+Cut	\$ 380/m	+\$50 cut	next \$30	75 Ø K1045 Peeled h9	Induction Hardened
PG75+Cut	\$ 510/m	+\$50 cut	next \$30	75 Ø 4140 Ground h9	Induction Hardened
P76-125H	\$ 298	2.996"	4.93"	H89x63	Eimco - HRB322
P76-159HT	\$ 430	2.982"	6.25"	John Deere	T43809
P76G185P	\$ 230	2.998"	7.28UH	4E3196 G88 UH	CAT962G,966G,972GH-Pin-C
P76G192M	\$ 258	2.996"	7.56"	Eimco C29 J16 M14.2	HRB316, 64400496
P76G211	\$ 280	2.983"	8.31"	John Deere 1:20:32 5-117SE	T43808
P76-229P	\$ 280	2.998"	9.00"UH	1V8954	Caterpillar 980G-Pin-L
P76G235P	\$ 280	2.999"	9.25"UH	Bucket Lift to Link G100uh P=U117	Case 610, Case 710
P76G240	\$ 220	3.000"	9.50"	Hollow Pin	Eimco A2U913-193123
P76-241P	\$ 440	2.998"	9.50"UH	130-2621	Caterpillar 980GPin-K
P76-242PL	\$ 440	2.998"	9.53"UH	Pin @ 12.5 kg	for CAT D10R 9J9055
P76-253	\$ 210	2.995"	9.96"UH	8J7727	Caterpillar 4140 IH
P76G263G	\$ 240	2.999"	10.35"	1:20:25 Centre Reliefx65mm	John Deere T77500
P76-267	\$ 328	2.998"	10.51"	1:16.5:51 ¾"UNCx32 SE	Eimco 222 402
PG76-268	\$ 328	2.998"	10.52"	Eimco A2U130-193330	Sandvik BU00001205
P76-272P	\$ 260	2.999"	10.71"UH	5J1204 K8x15°20-69Y200-60x50-30	Caterpillar D11-PIN-F
P76G280M	\$ 292	2.998"	11.00"	2-8-148	Eimco EA8003
P76-290	\$ 170	2.998"	11.42"	Eimco Aftermarket Made in Australia	A2U913-193195
P76-305P	\$ 260	2.998"	12.00"	CAT Aftermarket Made in Australia	P=X114 3V6646
P76G330P	\$ 410	2.997"	13.00"	9W6343	CAT Pin
P76G333	\$ 290	2.997"	13.11"	7K9345	CAT930-Pin-K
P76G337P	\$ 240	2.997"	13.26"UH	138-6685 G=158uh	CAT966G, 972GH-Pin-B
P76G391M	\$ 370	2.997"	15.39"	2-8-106 2-8-82 C30 M14.2 J16	Eimco HRB317
P76-410P	\$ 420	2.997"	16.14"	4T3535 20-70Y208 L45 W55	D10, D11 Ripper
P76-801	\$ 310	2.997"	800mm	Induction Hardened	50 mm Mild One End
P76-1000	\$ 470	2.997"	1m	3" Ø K1045 Peeled h9	Induction Hardened
PG76-1000	\$ 585	2.998"	1m	3" Ø 4140 Ground h8	35.8 kg/m Induction Hardened
P76+Cut	\$ 440/m	+\$50 1st cut	\$30 next	3" Ø K1045 Ground h9	Induction Hardened
P76Pld+Cut	\$ 360/m	+\$50 1st cut	\$30 next	3" Ø K1045 Peeled h9	Induction Hardened
PP76+Cut	\$ 450/m	+\$50 1st cut	\$30 next	3" Ø 4140 Peeled h9	35.8 kg/m Induction Hardened
PG76+Cut	\$ 555/m	+\$50 1st cut	\$30 next	3" Ø 4140 Ground h8	35.8 kg/m Induction Hardened

Hardened Steel Perth WA Delivered Next Day

Place your order in the morning for delivery to Perth next day
Perth Pin Steel Cut & delivered next day using TNT next day delivery service

Perth Steel

Next Day @ \$8.80 / kg

Example 1:

70mm Dia x 1 metre bar \$286
Plus 35 kg Air Freight \$308
Total Free Into Store: \$594

Example 2:

70mm Dia Pin x 600mm \$184
Plus 19 kg Air Freight \$167
Total Free Into Store: \$351

Perth WA Hardened Steel 4140 Delivered Next Day

Place your order in the morning for delivery to Perth next day

4140 Pin Steel

Cut & delivered next day using TNT Express next day delivery service

**Perth Steel Next Day
@ \$8.80 / kg**

Example 3:

65mm 4140 Pin x 500mm \$270
Plus 25 kg Air Freight \$220
Total Free Into Store: \$490

Examples above are based on current costs and are subject to change without notice and do not include GST

**Pins and Bushes
Shims and Seals
Tools and Cutters
Retail Orders POA
Minimum \$130**

Plus freight & GST. All prices subject to change without notice

Cut Pieces: Phone orders must be confirmed by email. No Returns. \$130 Minimum Order.

Induction Hardened Pin Steel - K1045 and 4140

<u>KSet Part No.</u>	<u>Price</u> EX GST	<u>Diameter</u>	<u>Length</u>	<u>Manufacture Notes</u>	<u>Machine Locations</u>
P80G100P	\$208	79.9mm	100mmUH	Case 590-Pin-A	P=Q100 K6 175596A1
P80-145MP	POA	79.9mm	145mmUH	Kobelco	SK045 Tower Pin
P80-195P	\$220	79.9mm	195mmUH	Komatsu 205-70-65750	K8x25° PC220-Pin-B
P80-202P	\$264	79.9mm	202mmUH	Komatsu 205-70-71320	K15 PC220-Pin-G
P80G205P	\$230	79.9mm	205mmUH	Hyundai Wheel Loader	HL757-9-Pin-L,K
P80-213	\$122	79.9mm	213mm	Induction Hardened	20 mm Mild One End
P80G215P	\$240	79.9mm	215mmUH	Hyundai Wheel Loader	HL757-9-Pin-J
P80-218P	\$218	79.9mm	218mmUH	Komatsu 206-70-51170	PC200,220-Pin-D,E,G
P80-250P	\$260	79.9mm	250mmUH	Komatsu	PC200,220-7,8-Pin-E
P80-413P	\$298	79.9mm	413mmUH	Komatsu 206-70-53140	F110N12 PC220-Pin-H
P80-436P	\$380	79.9mm	436mmUH	Caterpillar 087-5845	Aftermarket CAT320C
PG80-414P	\$396	79.98	414mmUH	206-70-71320 IH4140 For Hammer	PC220-Pin-HAM
P80-415P	\$290	79.9mm	413mmUH	3088581 Hitachi	ZX200, 225US-3-Pin-H
P80-445P	\$352	79.9mm	445mmUH	Suits KBV1451	SH300-Pin-I
P80G470GP	\$460	79.9mm	470mmUH	Kobelco Aftermarket Australian	SK220-Pin-I
PG80-470P	\$490	79.9mm	470mmUH	Kobelco Aftermarket Australian	SK220-Pin-H
PG80G480P	\$480	79.98	480mmUH	Kobelco Aftermarket Australian	SK310-Pin-I
PG80-488P	\$490	79.98	488mmUH	IH4140 For Hammer	SK250-Pin-HAM
P80-496P	\$380	79.9mm	496mmUH	3088577	ZX200-3-Pin-J
P80-500	\$310	79.9mm	500mm	Hardened Quick Hitch	PC200, 220-Pin-Q
P80-502P	\$480	79.9mm	502mmUH	LC12B0106P1	Kobelco SK330-Pin-I
P80-513P	\$348	79.9mm	513mmUH	205-70-73270 F100N10	PC200,220-Pin-J,K
P80-516P	\$380	79.9mm	516mmUH	Kobelco Aftermarket Made in Australia	SK220-8-Pin-J
P80-542	\$380	79.9mm	542mm	Caterpillar 087-5805	Aftermarket CAT320-Pin-J
P80-561	\$390	79.9mm	561mm	Cat Similar to 087-5805	CAT320-Pin-J
P80-600	\$350	79.9mm	600mm	K1045 h10	Induction Hardened Full Length
P80-648	\$490	79.8mm	648mm	Caterpillar Aftermarket	CAT325, 330 7Y3549
P80-651	\$350	79.9mm	650mm	Induction Hardened	50 mm Mild One End
P80-722	\$738	79.9mm	722mm	Komatsu 206-70-21210	PC220,250-8-Pin-C
P80-798	\$490	79.9mm	798mm	Komatsu 206-70-51190	PC200,220-Pin-C
P80-802	\$440	79.9mm	800mm	Induction Hardened	50 mm Mild Both Ends

Dimensions shown are for the KSet Engineered Pin, not for similar OEM Parts

P80-1000	\$530	79.9mm	1metre	80 Ø K1045 Ground h9	Induction Hardened
PG80-1000	\$645	79.95 Ø	1metre	4140 Ground h9 39.5kg	Induction Hardened
P80+Cut	\$500/m +\$50 1st cut		\$30 next	80 Ø K1045 Ground h9	Induction Hardened
P80Pld+Cut	\$400/m +\$50 1st cut		\$30 next	80 Ø K1045 Peeled h9	Induction Hardened
P80Pld+Cut	\$515/m +\$50 1st cut		\$30 next	80 Ø 4140 Peeled h9	Induction Hardened
PG80+Cut	\$615/m +\$50 1st cut		\$30 next	80 Ø 4140 Ground h9	Induction Hardened

Cut Pieces: Phone orders must be confirmed by email. No Returns. \$130 Minimum Order.

Perth Steel Delivered Next Day

Place your order in the morning for delivery to Perth WA next day
Perth Pin Steel Cut & delivered next day using TNT next day

Perth Steel 4140 Delivered Next Day

Place your order in the morning for delivery to Perth WA next day
4140 Pin Steel Cut & delivered next day using TNT next day delivery service

Bushes and Pins Seals and Shims Cutters and Tools Retail Orders POA Minimum \$130

Plus freight & GST. All prices subject to change without notice

Induction Hardened Pin Steel - K1045 and 4140

<u>KSet Part No.</u>	<u>Price</u> EX GST	<u>Diameter</u>	<u>Length</u>	<u>Manufacture Notes</u>	<u>Machine Locations</u>
3.25" Ø					
P83G387	\$ 465	3.248"	387mm	A2U936-193224	Eimco 0811 790
PG83-640	\$ 450	3.248"	640mm	Precision Ground 4140	Induction Hardened
PG83-650	\$ 460	3.248"	650mm	Precision Ground 4140	Induction Hardened
85mm Ø					
P85-205P	\$ 300	84.9mm	205mm	419-T80-4831 P=X90	WA320PZ-6-Pin-L,K
P85-230P	\$ 242	84.9mm	230mm	424-70-11922 424-70-11720 P=X90	WA380 - 430-Pin-L,K
P85G230P	\$ 320	84.9mm	230mmUH	424-70-11910, 424-70-41910	WA350,380,420,430-Pin-J
P85-250P	\$ 300	84.93mm	250mmUH	Komatsu	WA380-PIN-L,K
P85G250P	\$ 320	84.93mm	250mmUH	423-70-21910	Komatsu
P85G260P	\$ 320	84.93mm	260mmUH	419-70-11790 Komatsu	WA320-Pin-A
P85F310	\$ 580	84.98mm	309mmUH	32305888, 10055925, 60420960	Sandvik Drill TB40
P85F339	\$1080	84.98mm	339mmUH	Sandvik Drill TB40	
P85-1000	\$ 570	84.91mm	1metre	85 Ø K1045 Ground h9	47kg Induction Hardened
P85+Cut	\$520/m +65 1st cut	next	\$45	85 Ø K1045 Peeled h9	Induction Hardened
P85+Cut	\$520/m +65 1st cut	next	\$45	85 Ø K1045 Ground h9	Induction Hardened
3.5" Ø					
PG89G222TP	\$ 588	3.498"	8.74"UH	242 352 4140 OAL 279.5	Eimco Artic. Pin
PG89G222PN	\$ 880	3.498"	8.74"UH	242 352 Eimco Pin with Nut	A2U130-196120
P89-210T	\$ 200	3.498"	8.29"UH	115-7048 1V8953 similar	CAT 980GII, CAT-980G-Pin-D
P89G225P	\$ 368	3.498"	8.86"UH	235-7396 G 105 uh P= X115	CAT-930-Pin
P89-239P	\$ 260	3.498"	9.41"UH	9J2290 20-16Y200-60x50-30	Suit Caterpillar D11-Pin-D
P89-240PL	\$ 190	3.498"	9.49"UH	Cat D10R Type Y Plate	for 7T7222
P89-241P	\$ 190	3.498"	9.49"UH	4V7099 Cat966G,972GH-Pin-E,L,K	Cat980G-Pin-E
P89G260G	\$ 330	3.495"	10.26"	A2U936-193247 G1=130, G2=180 Thru	Eimco
P89-283P	\$ 410	3.498"	11.14"UH	130-5355	CAT D11-Pin
P89G312G	\$ 360	3.497"	12.28"	A2U130-193327 Zerk,G=143,OE:C16 D17.5	222 401
P89-317P	\$ 440	3.497"	12.48"UH	185-7219	CAT950-Pin-J
P89G326	\$ 369	3.497"	12.84"	A2U130-193459 A2U130-193333 A2U130-193210	Eimco
PG89G326	\$ 369	3.497"	12.84"	BU00001203	Sandvik 4140
P89G334P	\$ 280	3.497"	13.15"UH	138-6679 G186 H8 opposite end	966G, CAT972GH-Pin-D
P89G337P	\$ 320	3.497"	13.29"UH	138-6674 G178 opposite end	CAT966G, 972GH-Pin-A
PG89G338	\$ 364	2.498"	13.31"	A2U220-19345 C15.5 D18.3	4140 Eimco
P89-350P	\$ 390	3.500"	13.78"UH	9J6691 K7x15° 3.502" CAT D10R, D11-Pin-B	105-5448
P89-350CP	\$ 390	3.500"	13.78"UH	3T7792 Aftermarket Pin	CAT-D11-Pin
P89-354P	\$ 390	3.499"	13.94"UH	132-0055 Aftermarket Pin	CAT-D11-Pin-Ripper
P89-375C	\$ 336	3.497"	14.76"	9J2364 C36 M14 J67	CAT-D11-Push Arm/Blade x4
PG89-540	\$ 546	3.498"	21.27"	BU00001206	Sandvik
P89-541	\$ 544	3.498"	21.30"	A2U130-193434, A2U130-193329, 222 400	Eimco ED10
PG89-601	\$ 420	3.497"	600mm	Precision Ground 4140	50 mm Mild One End
P89-1000	\$ 670	3.498"	1metre	K1045 h9	49kg Induction Hardened
PG89-1000	\$ 830	3.498"	1000mm	Precision Ground 4140	Induction Hardened
P89+Cut	\$630/m+\$60 1st cut	\$40 next		3.5" Ø K1045 Ground h9	Induction Hardened
PG89+Cut	\$790/m+\$60 1st cut	\$40 next		3.5" Ø 4140 Ground h9	Induction Hardened

K1045 is a medium tensile steel for machining up **Link Pins**. **Pivot Pins** machined from K1045 must be **Surfaced Hardened** by Induction or Flame & **Tempered** at 180 to 200 Celsius. **4140** is a high tensile steel.

Replacement Excavator Pins to be equivalent to or better than Original Equipment pins: At **KSet** Hardness Testing is performed on the core of the OEM pin to determine **K1045** or **4140** material. **KSet** Hard Steel Shaft is chosen for a professional earthmoving equipment pin.

Pins and Bushes
Shims and Seals
Tools and Cutters
Retail Orders POA
Minimum \$130
 Plus freight & GST. All prices subject to change without notice

Cut Pieces: Phone orders must be confirmed by email. No Returns.

Induction Hardened Pin Steel - K1045 and 4140

90mm Diameter Pin Steel, Made and Processed in Australia

KSet Part No.	Price Ex Gst	Diameter	Length	Manufacture Notes	Machine Locations
90 Ø					
P90G205P	\$310	89.9mm	205mmUH	Hyundai Wheel Loader Q100	HL757-9-Pin-E
P90-236P	\$228	89.9mm	236mmUH	207-70-51210, 207-70-32160	PC300-Pin-B,G
P90-237P	\$230	89.9mm	236mmUH	Komatsu Aftermarket Australia Y87	PC300-Pin-G
PG90-361	\$550	89.9mm	361mmUH	Pivot Pin Chock Trailer Suit Eimco A2U900-193480	
P90-480P	\$490	89.9mm	480mmUH	205-70-65680	Komatsu PC200,220-Pin-F
PG90-480P	\$590	89.9mm	480mmUH	Kobelco Pin IH 4140	SK350-Pin-H
P90-500P	\$510	89.9mm	500mmUH	Kobelco Excavator Pin	SK220-Pin-J,K
P90-502P	\$480	89.9mm	506mmUH	LC12B0102P	Kobelco - SK330-Pin-H
P90-506P	\$475	89.9mm	502mmUH	LQ12B01439P1	SK250-Pin-J,K
P90-508	\$380	89.9mm	508mm	Kobelco Excavator Pin	SK220-Pin-Q
P90-510P	\$395	89.9mm	510mmUH	207-70-33140 F110N16	Komatsu PC300-Pin-H,I
PG90-511P	\$430	89.9mm	510mmUH	Hammer Pin Induction 4140	PC300-Pin-Ham
P90-536P	\$550	89.9mm	536mmUH	Kobelco	SK350-Pin-H
P90-545P	\$475	89.9mm	545mmUH	Hitachi Aftermarket Made in Australia	ZX350-Pin-I
P90-546P	\$475	89.9mm	540mmUH	7Y3547 325B - 322L CAT322,325 330-Pin-J	
P90-570P	\$435	89.9mm	570mmUH	207-70-61230, 207-70-33130	PC300,350-Pin-J,K
P90-578P	\$435	89.9mm	578mmUH	Hitachi Aftermarket Longreach	EX350-LR-Pin-F
P90-605P	\$435	89.9mm	605mmUH	Hitachi Aftermarket Made in Australia	ZX240-Pin-J
P90-618P	\$480	89.9mm	620mmUH	Kobelco	SK310-Pin-J,K
P90-620P	\$480	89.9mm	620mmUH	LC12B01217P1	SK330-Pin-J,K
P90-637P	\$350	89.9mm	637mmUH	251-2558	DB Family Cat330D-Pin-K
P90-658	\$590	89.9mm	658mm	Cat325, Cat330	Similar to 7Y3550
P90-810P	\$460	89.9mm	810mmUH	Komatsu Excavator Pin	PC220-2,200-Pin-A
P90-1000	\$690	89.94mm	1metre	Precision Ground h9 K1045	Induction Hardened
PG90-1000	\$830	89.95Ø	1metre	90 Ø 4140 Ground h8 50 kg	Induction Hardened
P90+Cut	\$650/m	+\$65 1st cut	\$40 next	90 Ø K1045 Ground h9	Induction Hardened
PP90+Cut	\$510/m	+\$65 1st cut	\$40 next	90 Ø 4140 Peeled h10	Induction Hardened
PG90+Cut	\$790/m	+\$65 1st cut	\$40 next	90 Ø 4140 Ground h8	Induction Hardened
PG90-Cr+Cut	\$790/m	+\$65 1st cut	\$40 next	90 Ø Hard Chrome 36MnVS6	Induction Hardened
95 Ø Pin Steel					
P95G180P	\$305	94.92Ø	180mmUH	419-70-11950 P=X91	Komatsu WA320-Pin-D
P95G205P	\$300	94.9mm	205mmUH	424-70-11972 P=X92	Komatsu WA420-3-Pin-C
P95-208P	\$330	94.92Ø	208mmUH	419-70-11941 P=X91	Komatsu WA320-Pin-E
P95G258P	\$360	94.9mm	258mmUH	421-70-11410 P=X91	WA450, 470-1-Pin-J
P95-259P	\$340	94.9mm	259mmUH	421-70-41910	Komatsu WA450, 470-6-Pin-J
P95G259P	\$340	594.9mm	259mmUH	421-70-21910	Komatsu WA450, 470-3-Pin-J
P95G276P	\$380	94.9mm	275mmUH	424-70-21980, 11981	Komatsu WA420-3-Pin-B
P95G279P	\$380	94.9mm	279mmUH	385-1001-8732 1-8-137: 180°PL	Komatsu
P95-288P	\$358	94.9mm	288mmUH	421-70-11922	WA250PZ-6-Pin-F, WA450,470-Pin-L,K
P95G300P	\$380	94.9mm	300mmUH	424-70-11880 P=X91	Komatsu WA420-3-Pin-A
P95-311	\$190	94.92	311mmUH	Induction Hardened K1045	10 mm Mild One End
P95-388P	\$340	94.92	388mmUH	419-70-11960 P=X91	Komatsu WA320-Pin-F
P95-1000	\$830	94.92	1metre	95 Ø K1045 Ground h9	Induction Hardened
P95+Cut	\$790/m	+\$65 1st cut	\$40 next	95 Ø K1045 Ground h9 56 kg/m	Induction Hardened

Cut Pieces: Phone orders must be confirmed by email. No Returns. \$130 Minimum Order.

Hardened Steel Perth Delivered Next Day

Place your order in the morning for delivery to Perth WA next day
Perth Pin Steel Cut & delivered next day using TNT
next day delivery service

Perth Hard Steel Next Day Freight @ \$8.80 / kg

Example: **90mm x 1 metre bar**
\$460 Plus 54 kg Air Freight \$475
Free Into Store = \$935

Example: **90mm Pin x 600mm**
\$300 Plus 34 kg Air Freight \$299
Free Into Store = \$599

Perth Pin Steel 4140 Delivered Next Day

Place your order in the morning for delivery to Perth WA next day
4140 Pin Steel

Cut & delivered next day with TNT next day delivery service

Perth Pin Steel Next Day Freight @ \$8.80 / kg

Example:
90mm 4140 Pin x 500mm \$260
Plus 25 kg Air Freight \$220
Free Into Store = \$480

All examples above are based on current costs and are subject to change without notice and do not include GST

Bushes and Pins Seals and Shims Cutters and Tools Retail Orders POA Minimum \$130

Plus freight & GST. All prices subject to change without notice

Induction Hardened Pin Steel - K1045 and 4140

<u>KSet Part No.</u>	<u>Price</u> Ex Gst	<u>Diameter</u>	<u>Length</u>	<u>Manufacture Notes</u>	<u>Machine Locations</u>
P96-282T	\$ 580	3.749"	282mm	Cat980F	Aftermarket for 9C0624
P100-240P	\$ 298	99.9mm	240mmUH	207-70-31190, 30090	Komatsu PC300-Pin-D,E
P100G240P	\$ 460	99.9mm	240mmUH	Kawasaki Wheel Loader	Pin-D
P100-259P	\$ 320	99.75mm	259mmUH	Cat325, 330	Similar to 117-5435
P100-263P	\$ 288	99.9mm	263mmUH	206-70-71420	PC270-Pin-B
P100-270P	\$ 298	99.9mm	270mmUH	208-70-31210, 61210	PC400, 450-Pin-B
P100-275W	\$ 160	99.9mm	275mm	Tapped End Without End Plate	PC400, 450-Pin-B
P100-304P	\$ 310	99.9mm	304mmUH	Hitachi = P100-318P	ZX450H-3-Pin-G
P100-310P	\$ 319	99.9mm	310mmUH	207-70-61191	PC300-6-Pin-D
P100G350P	\$ 490	99.92	350mmUH	Volvo L180E-Pin-B	G=175uh P=Q91 Lif Cyl / Body
P100G370G	\$ 685	99.82	370mm	503147	FBL10-Pin-J
P100-553P	\$ 496	99.9mm	553mmUH	F120N12 208-70-33140	208-70-73131 PC400,450-Pin-H,I
P100-567P	\$ 395	99.9mm	567mmUH	251-2557	DB Family Cat330D-Pin-H
P100-580P	\$ 620	99.9mm	580mmUH	VOE1451 8061	Volvo EC460-Pin-I
P100-614P	\$ 448	99.9mm	614mmUH	251-2552	DB Family Cat330D-Pin-J
P100-615P	\$ 580	99.9mm	615mmUH	F120x12 208-70-33130, 208-70-73520	PC400,450-Pin-J,K
P100-635P	\$ 526	99.9mm	615mmUH	Hitachi P=H96 D23 C50	ZX350-Pin-K
P100-640P	\$ 526	99.9mm	640mmUH	Sumitomo P=H96 D21 C30	SH460-Pin-K
P100-666P	\$ 640	99.9mm	666mmUH	VOE1450 8374 Or P100-660P	Volvo EC460-Pin-K
P100-680P	\$ 500	99.9mm	680mmUH	Caterpillar compatible	CAT330D-Pin-H
P100-690P	\$ 500	99.9mm	690mmUH	Sumitomo Made in Australia	SH460-Pin
P100-800P	\$ 710	99.9mm	796mmUH	206-70-55270	Komatsu PC220-Pin-A
P100-940	\$ 698	99.9mm	940mm	207-70-31172	PC300,350-PIN-C
P100-1000	\$ 850	99.9mm	1metre	100 Ø K1045 Ground h9	Induction Hardened
PG100-1000	\$ 1020	99.9mm	1metre	100 Ø 4140 Ground h9 61.7kg	Induction Hardened
P100+Cut	\$810/m	+\$65 1st cut	\$40 next	100 Ø K1045 Ground h9	Induction Hardened
PG100+Cut	\$1020/m	+\$65 1st cut	\$40 next	100 Ø 4140 Ground h9	Induction Hardened
PG100-Cr+Cut	\$1020/m	+\$65 1st cut	\$40 next	100 Ø Hard Chrome 36MnVS6	Induction Hardened

4 inch Diameter Pins & Shaft:

PG102-202P	\$1730	3.998"	202UH	0501-10001	Jug-A-0 Articulation Pin
P102G229	\$ 500	3.998"	229mm	913-500003	Eimco 6480 2959
PG102G240TP	\$ 680	3.998"	240mmUH	A2U220-193387	Nut=A2U220-196134 Eimco ED10
PG102G240PN	\$1070	3.998"	240mmUH	A2U220-193387	Pin & Nut Assembly A2U220-196134
P102G319P	\$ 410	3.998"	318mmUH	CAT D10R	G=150uh tapped plate end. for 111-2106
P102-420M	\$ 680	3.996"	420mm	238 040 Slot30x22Deep both ends	Eimco 5/8UNCx25
P102-421M	\$ 680	3.996"	420mm	A2U130-193431	5/8UNCx25 Was Eimco 238 040
P102-440C	\$ 450	3.997"	440mm	130-3434	CAT D11 Push Arm / Con Block
P102-900	\$ 630	3.997"	900mm	K1045 h9	Induction Hardened Full Length
P102-1000	\$ 730	3.997"	1000mm	K1045 h9	Induction Hardened Full Length
PG102-845	\$1288	3.998"	845mm	0502-10035	4140 Jug-A-0 Pin Boom Pivot
PG102G845G	\$1660	3.998"	845mm	0505-10014	4140 Jug-A-0 Pin MIS Pivot
P102+Cut	\$790/m	+\$65 1st cut	\$40 next	4" Ø K1045 Ground h9 64kg	Induction Hardened
PG102+Cut	\$1050/m	+\$65 1st cut	\$40 next	4" Ø 4140 Ground h9	Induction Hardened
PG102-Cr+Cut	\$1490/m	+\$65 1st cut	\$40 next	4" Ø h8 Hard Chrome 4140 Australian	Induction Hardened

Cut Pieces: Phone orders must be confirmed by email. No Returns. \$130 Minimum Order.

Pin Steel

*KSet hardened steel bush
Leave KSet Monday
Arrive New Zealand
Wednesday*

*Case Hardened Bushses
Hardened Steel Canada
KSet hardened steel bush
Leave KSet Friday
Arrive Canada Monday
Case Hardened Bushses*

*Steel Bearing Sleeve USA
KSet hardened steel bush
3 days to North America
Leave KSet Wednesday
Delivered America Friday*

*America Steel Bearings
KSet hardened steel bush
3 day delivery to USA
Leave KSet Friday
Delivered America Monday*

**Pins and Bushes
Shims and Seals
Tools and Cutters
Retail Orders POA
Minimum \$130**

Plus freight & GST. All prices subject to change without notice

Induction Hardened Pin Steel - K1045 and 4140

<u>KSet Part No.</u>	<u>Price</u> EX GST	<u>Diameter</u>	<u>Length</u>	<u>Manufacture Notes</u>	<u>Machine Locations</u>
PG105-Cr+Cut	\$1080/m+\$65 1st cut		\$40 next	105 Ø h8 Hard Chrome 36MnVS6	Induction Hardened
P108-232P	\$300	4.249"	232mmUH	Suit Caterpillar Wheel Loader	1V8957
P108-390P	\$320	4.249"	390mmUH	304-7349 X116	CAT 980H
P108-391P	\$320	4.249"	391mmUH	CAT 980G-Pin-B	X114 for 1V8949
P108+Cut	\$960/m +\$70 1st cut		\$50 next	Induction Hardened 71.9 kg/m	K1045 Ground h9
P110-198P	\$420	109.9mm	198mmUH	41K-70-15240 Frame Support (4)	WF450T-1
P110-210P	\$345	109.9mm	210mmUH	To suit	Komatsu WA250PZ-6-Pin-E
P110G229P	\$380	109.9mm	229mmUH	421-70-11970	Komatsu WA450, 470-Pin-C
P110-235P	\$395	109.9mm	235mmUH	424-70-11940	WA420-Pin-E
P110G240P	\$365	109.9mm	240mmUH	424-70-11960 424-70-11950	WA380, 420-Pin-D
P110-245P	\$360	109.9mm	245mmUH	8069305, 8080936	EX350-Pin-B
P110-270P	\$298	109.9mm	270mmUH	208-70-61220, 31190	PC400-Pin-E
P110G283P	\$380	109.9mm	283mmUH	425-70-11310, 11320	WA500-1-Pin-J
P110-287P	\$440	109.9mm	287mmUH	Aftermarket Made in Australia	Hitachi ZX450H-3-Pin-B
P110-295P	\$450	109.9mm	295mmUH	425-70-11920	WA500-Pin-L,K
P110G299P	\$480	109.9mm	299mmUH	421-70-31950	Q120 Plate WA480-6-Pin-A
P110G300P	\$510	109.9mm	300mmUH	425-70-11720	WA500-Pin-J
P110G301P	\$460	109.9mm	300mmUH	421-70-11980	WA450, 470-Pin-B
P110G302P	\$450	109.9mm	300mmUH	Hyundai Wheel Loader	HL757-9-Pin-F
P110-307P	\$485	109.9mm	307mmUH	3079492 Australian Aftermarket	EX350-Pin-D,E
P110G310P	\$520	109.9mm	299mmUH	421-70-31950 G=150uh	WA470-7-Pin-A
P110-330P	\$338	109.9mm	330mmUH	Komatsu - 208-70-61191	PC400-Pin-D
P110G340P	\$560	109.9mm	340mmUH	421-70-11950	WA450, 470-Pin-A
P110-522P	\$690	109.9mm	522mmUH	207-70-61181, 207-70-31180	PC300-Pin-F
P110-580P	\$695	109.9mm	580mmUH	Aftermarket Made in Australia	Volvo EC460-Pin-H
P110-582P	\$690	109.9mm	582mmUH	Komatsu - 21M-70-11171	PC600-6-Pin-H,I
P110-591P	\$650	109.9mm	591mmUH	Hitachi - 8069307 - P=Q150	EX350-Pin-F
P110-625P	\$680	109.9mm	625mmUH	235-7636	CAT345-Pin-J
P110-636P	\$986	109.9mm	636mmUH	Komatsu - 209-70-73140	PC800-Pin-H
P110-680P	\$780	109.9mm	675mmUH	Hitachi Excavator Pin Australia	EX450-Pin-J,K
P110-703P	\$800	109.9mm	703mmUH	Volvo VOE1454 8375	EC460-Pin-J
P110-710P	\$820	109.9mm	675mmUH	Hitachi Excavator Pin Australia	ZX450-Pin-J
P110-742P	\$POA	109.9mm	742mmUH	For Cat 212-3088 [Hard Chrome]	Linkage Pin
P110-952	\$902	109.9mm	952mm	Aftermarket Made in Australia	Hitachi EX350-Pin-C
P110-986	\$688	109.9mm	985mm	Komatsu - 208-70-31172	PC400-Pin-C
P110-995P	\$980	109.9mm	995mmUH	Komatsu - 207-70-31160	PC300-Pin-A
P110-999P	\$880	109.9mm	999mmUH	8069273 K9	EX350-Pin-A
P110-1000	\$960	109.9mm	1000mm	Induction Hardened K1045	Precision Ground
P110-1030	\$970	109.9mm	1030mm	To Make	CAT-330-Pin-C

Dimensions shown are for the KSet Engineered Pin, not for similar OEM Parts.

P110+Cut	\$990/m +\$70 1st cut	\$50 next	Induction Hardened 74.6 kg/m	K1045 Ground h9
PG110+Cut	\$1130/m +\$70 1st cut	\$50 next	Induction Hardened 74.6 kg/m	4140 Ground h9

Cut Pieces: Phone orders must be confirmed by email. No Returns. \$130 Minimum Order.

Pivot Pins, Bushes
Shims, Seals
for Excavator Loader Bucket
for delivery to Perth WA next day.
Perth Pin Steel Cut & delivered
next day using TNT next day
delivery service

Excavator Pivot Pins
Excavator Pin Steel
Hunter Valley Engineering
Hunter Valley
Engineering Supplies
Hunter Valley
Engineering Steels

High Tensile Pivot Pins
for Load Haul Dump Machines
Hunter Valley
Lineborer Supplies

Bushes and Pins
Seals and Shims
Cutters and Tools
Retail Orders POA
Minimum \$130

Plus freight & GST. All prices
subject to change without notice

Induction Hardened Pin Steel - K1045 and 4140

<u>KSet Part No.</u>	<u>Price</u> ExGST	<u>Diameter</u>	<u>Length</u>	<u>Manufacture Notes</u>	<u>Machine Locations</u>
P114-350P	\$ 550	4.498"	350mmUH	Drawbar/Toobar K6x15°	D11-Pin-A 9J3226
P114-370P	\$ 450	4.497"	370mmUH	Drawbar/Mainfame X203	D11 Ripper 4T2805
P114-390	\$ 445	4.497"	390mm	Induction Hardened K1045	40mm Mild One End
P114-390P	\$ 610	4.498"	390mmUH	1V-8947 P=X128	CAT 980G-Pin-A
P114-420	\$ 340	4.497"	420mm	Aftermarket Caterpillar Pins	KSet Engineering
P114-491P	\$ 720	4.497"	491mmUH	4T8901 Aftermarket	D11 Ripper Pin
PG114-740	\$ 720	4.499"	740mm	4 1/2" Ø Hard Chrome 36MnVS6	Induction Hardened
P114+Cut	\$ 870/m	+\$75 1st cut	\$50 next	4.5" Ø K1045 Ground h9	Induction Hardened

115mm Diameter Pins & Shaft:

P115-637P	\$ 780	114.9 mm	637mmUH	Komatsu - 209-70-57340 Y126	PC800-Pin-I
P115-641P	\$ 800	114.9 mm	641mmUH	Komatsu - 21M-70-11260	PC600-6-Pin-K
P115-662	\$ 630	114.9 mm	662mm	K1045 h10 - Induction	Hardened Full Length
P115-712P	\$ 940	114.9 mm	712mmUH	Komatsu - 209-70-57350 Y126	PC800-Pin-K
P115-740P	\$ 950	114.9 mm	740mmUH	Komatsu - 21M-70-11160	P115-732 PC600-6-Pin-J
P115-762	\$ 700	114.9 mm	752mm	K1045 h10 - Induction	Hardened Full Length
P115+Cut	\$ 1080/m	+\$75 1st cut	\$50 next	115 Ø K1045 Ground h9	82kg/m Induction Hardened

120mm & 125mm Diameter Pins & Shaft:

P120G250P	\$ 440	119.9mm	250mmUH	Komatsu - 421-70-21960 X120	WA470-Pin-D
P120G258P	\$ 440	119.9mm	258mmUH	Komatsu - 425-70-11770 X120	WA500-Pin-C
P120-259P	\$ 480	119.9mm	259mmUH	Komatsu - 421-70-11940	WA470-Pin-E
P120-270	\$ 330	119.9mm	270mm	Induction Hardened	20 mm Mild One End
P120G293P	\$ 550	119.9mm	293mmUH	Komatsu - 425-70-31970 X119	WA500-6-Pin-C
P120G304P	\$ 550	119.9mm	304mmUH	WA470-5-Pin-D 425-70-11950	WA500-Pin-D,E
P120G330P	\$ 710	119.9mm	330mmUH	Komatsu - 425-70-31910	WA500-6-Pin-J
P120-353P	\$ 710	119.9mm	353mmUH	Komatsu - 425-70-31920	WA500-6-Pin-L,K
P120G370P	\$ 680	119.9mm	370mmUH	Komatsu - 425-70-11780 X121	WA500-Pin-B
P120G371P	\$ 680	119.9mm	370mmUH	Komatsu - 425-70-11790 X121	WA500-Pin-A
P120-390P	\$ 630	119.9mm	390mmUH	Komatsu - 424-70-11950	WA380, 420-Pin-F
P120-475	\$ 510	119.9mm	475mm	Induction Hardened	20 mm Mild One End
P120-570P	\$ 686	119.9mm	570mmUH	208-70-31180, 31181	PC400, 450-Pin-F
P120-779P	\$ POA	119.9mm	779mmUH	For Cat 441-0038 [804mm uh Hard Chrome]	Pin
P120-996P	\$ 896	119.9mm	996mmUH	Komatsu - 208-70-31161 K16	PC400-Pin-A
P120-1125P	\$ 1280	119.9mm	1125mmUH	Hitachi Aftermarket Pin	ZX450H-3-PIN-A
P120+Cut	\$ 1190/m	+\$75 1st cut	\$50 next	120 Ø K1045 Ground h8	Induction Hardened
PG120+Cut	\$ 1280/m	+\$75 1st cut	\$50 next	120 Ø 4140 Ground h9	89kg/m Induction Hardened

P125G240	\$ 640	124.9mm	240mm	Eimco - A2U220-193386	ED10 Bolster Pin
P125G254P	\$ 680	124.9mm	254mmUH	426-70-11970 X120	Komatsu - WA600-Pin-C
P125G334P	\$ 770	124.9mm	334mmUH	425-70-31940 K10x15° X119 12clk	WA500-6-Pin-D,E
P125G338P	\$ 760	124.9mm	338mmUH	426-70-11211, 11221 Y119	WA600-1-Pin-J
P125G341P	\$ 960	124.9mm	341mmUH	Komatsu - 426-853-1110 Y119	WA600-3-Pin-J
P125-389P	\$ 760	124.9mm	389mmUH	Komatsu - 421-70-11961 X121	WA470-Pin-F
P125-459P	\$ 880	124.9mm	459mmUH	Komatsu - 421-70-31960 X120	WA480-5-Pin-F
P125-475	\$ 530	124.85	475mm	K1045 h10 - Induction	Hardened Full Length
P125+Cut	\$ 1290/m	+\$80 1st cut	\$50 next	125 Ø K1045 Ground h9	97kg Induction Hardened

Dimensions shown are for the KSet Engineered Pin, not for similar OEM Parts.

Cut Pieces: Phone orders must be confirmed by email. No Returns. \$130 Minimum Order.

Pins and Bushes
Shims and Seals
Tools and Cutters
Retail Orders POA
Minimum \$130

Plus freight & GST. All prices subject to change without notice

Induction Hardened Pin Steel - K1045 and 4140

<u>KSet Part No.</u>	<u>Price</u> Ex GST	<u>Diameter</u>	<u>Length</u>	<u>Manufacture Notes</u>	<u>Machine Locations</u>
P127-255P	\$ 300	4.999"	10.0"UH	1V8439 15-65X127-60x52	CAT 980G-Pin-F
P127-354P	\$ 400	4.999"	14.0"UH	4V7101 CAT972G-Pin-F	CAT 966G-Pin-F
P127+Cut	\$ 980/m	+\$85 1st cut	\$50 next	5"Ø K1045 Ground h8 99.5kg/m	Induction Hardened
P130-295	\$ 330	129.9mm	600mm	Induction Hardened	25 mm Mild One End
P130-601	\$ 660	129.9mm	600mm	Induction Hardened	50 mm Mild One End
P130-805P	\$ 1160	129.9mm	805mmUH	Komatsu 209-70-57331 209-70-57330	PC800-Pin-J
P130+Cut	\$ 1320/m	+\$85 1st cut	\$50 next	K1045 h9 Ground For 7Y3585	Induction Hardened
PG130+Cut	\$ 1590/m	+\$85 1st cut	\$50 next	Induction Hardened 104.2kg/m	4140 Ground h9
P135-1000	\$ 1280	134.9mm	1000mm	K1045 h10 - Induction	Hardened Full Length
P140-294P	\$ 950	139.9mm	294UH	Komatsu - 21N-72-11152	PC1250-Pin-B
P140G312P	\$ 950	139.9mm	312mmUH	Komatsu - 426-70-11950 X130	WA600-Pin-D
P140G325P	\$ 980	139.9mm	325mmUH	Komatsu - 426-70-31970 X130	WA600-6-Pin-C
P140G342P	\$ 980	139.9mm	342mmUH	Komatsu - 426-70-11941 X130	WA600-Pin-E
P140-343P	\$ 960	139.9mm	343mmUH	Komatsu - 426-70-11920 X130	WA600-Pin-L
P140-351P	\$ 960	139.9mm	351mmUH	Komatsu - 426-70-11361 Y122	WA600-3-Pin-K
P140G357P	\$ 990	139.9mm	357mmUH	Komatsu - 426-70-11360 Y122	WA600-1-Pin-K
P140G385P	\$ 1030	139.9mm	385mmUH	Komatsu - 426-70-31980 X130	WA600-6-Pin-B
P140-396P	\$ 1050	139.9mm	294mmUH	Komatsu - 21N-70-37210	PC1250-Pin-C
P140G419P	\$ 1080	139.9mm	419mmUH	Komatsu - 426-70-31910 X130	WA600-6-Pin-J
P140G424P	\$ 995	139.9mm	424mmUH	Komatsu - 426-70-11980 X130	WA600-Pin-B
P140G425P	\$ 995	139.9mm	424mmUH	Komatsu - 426-70-11990 X130	WA600-Pin-A
P140G430P	\$ 995	139.9mm	430mmUH	Komatsu	198-78-21140
P140G437P	\$ 1020	139.9mm	437mmUH	425-70-31990, 425-43-39121	WA500-6-Pin-A
P140-440P	\$ 950	139.9mm	440mmUH	Komatsu 426-70-31920 X130	WA600-6-Pin-L,K
P140-455P	\$ 950	139.9mm	455mmUH	Komatsu 425-70-11960, 11961	WA500-Pin-F
P140-636P	\$ 1100	139.9mm	636mmUH	Komatsu 209-944-7351	PC850-Pin
P140-845P	\$ 1180	139.9mm	845mm	Komatsu	PC1250-Pin-K
P140-965	\$ 1350	139.9mm	965mm	Komatsu Floating Pin 21N-939-3950	PC1250-Pin-J
P140 - Pld	\$ 790/m	+\$85 1st cut	\$50 next	K1045 h10 Peeled Finish	Induction Hardened
P140+Cut	\$ 1480/m	+\$85 1st cut	\$50 next	K1045 h9 Ground 120.84kg/m	Induction Hardened
PG150+Cut	\$ 2400/m	+\$85 1st cut	\$60 next	150 Ø Hard Chrome 36MnVS6	Induction Hardened
P160G330P	\$ POA	159.9mm	330mmUH	Komatsu - 426-70-31950 X160	WA600-6-Pin-D
P160G410P	\$ 1600	159.9mm	410mmUH	Komatsu - 426-70-31940 X160	WA600-6-Pin-E
P160G495P	\$ 1700	159.9mm	495mmUH	Komatsu - 426-70-31991 X160	WA600-6-Pin-A
P160-578P	\$ 1696	159.9mm	478mmUH	Komatsu - 428-70-11261	WA700-Pin
P160-579P	\$ 1750	159.9mm	478mmUH	428-70-11271 - 428-70-11281	WA700-Pin
P160-549P	\$ 2540	159.9mm	600mmUH	Komatsu - 425-70-31960 X160	WA500-6-Pin-F
P160G600P	\$ 2750	159.9mm	600mmUH	Komatsu - 426-70-11961	WA600-Pin-F
PG160+Cut	\$ 2800/m	+\$85 1st cut	\$60 next	160 Ø Hard Chrome 36MnVS6	Induction Hardened
P180-662P	\$ 2850	179.9mm	662mmUH	Komatsu - 426-70-31960 X160	WA600-6-Pin-F
PG180+Cut	\$ 3600/m	+\$85 1st cut	\$60 next	180 Ø Hard Chrome 36MnVS6	Induction Hardened

Cut Pieces: Phone orders must be confirmed by email. No Returns. \$130 Minimum Order.

Pins and Bushes
Shims and Seals
Tools and Cutters
Retail Orders POA
Minimum \$130

Plus freight & GST. All prices subject to change without notice